

College in Japan!

Adventure and Anxiety!

Tough to find facts:

- Language Barrier, even for the Kanji Pro
- True reality of “Culture Shock”
- Small Living
- Gender Norms and Perceptions
- Privacy
- Traveling



Language

- Slang
- Fast
- People will understand/nice
- speaking/listening easier than reading
- know your name in hiragana/kana
- occasionally prices written in kanji (rare)

料金表
~お1人様30分料金~

1:00~19:00(1ドリンク制)		19:00~5:00(1ドリンク制)	
月~金	¥80 (¥100)	日~木・祝	¥400 (¥533)
土・日・祝	¥120 (¥160)	金・土 祝前日	¥480 (¥640)

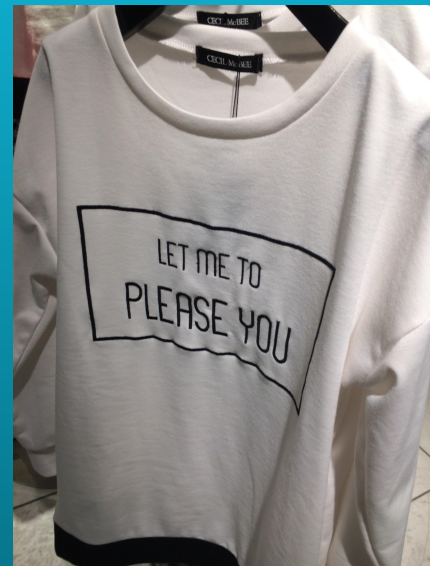
First Classのご利用は上記料金+¥300(¥400)(VIP会員は追加料金なし)

~フリータイムお1人様料金~
23:00~5:00(1ドリンク制)

日~木・祝	¥980 (¥1,300)	金・土 祝前日	¥1,980 (¥2,640)
-------	------------------	------------	--------------------

First Classのご利用は上記料金+¥300(¥400)(VIP会員は追加料金なし)

-Once you speak even a little Japanese, they'll assume you're fluent



Culture Shock

- DIET CHANGE (FIBER)
- Trash and Recycling
- Cash vs. Credit Card
- Business Hours
- Public Space vs. Private Space
- Bathrooms



Small Living

- Kitchens (no ovens, microwaves uncommon but not rare)
- Storage (plenty of small storage, occasionally little clothing space)
- Laundry
- Bedding (Duvets, Twin Beds)



Gender Norms and Perceptions

- Women Only trains.
- Women may have curfews in dorms.
- Ladies “aren’t meant to stay out and drink”.
- Language.
- Many business have mandatory high heels (#KuToo)



Privacy

- As in Europe, many onsen and spa like facilities require full nudity (separated by male and female).
- PDA (Public Displays of Affection) are highly frowned upon by most of Japanese society.
- Private spaces are meant for more personal things, like conversations, meals, etc. which you typically wouldn't do in a public space which is shared.

Traveling in Japan

-Even if the seats are empty, DON'T sit in the Priority Seats.

-Factor in time for transfers.

-Check for Local, Rapid, and Special Rapid (prices will vary).

-If using Shinkansen alot, look into a JR Pass.

-Rush Hour: 6:30-9:00 am, and occasionally the final train of the night.



Applying

Before Applying



-Can you afford it?

-Ask again: can you afford it?

-Speak to a Study Abroad advisor, or Study Abroad department

-May have prerequisites (GPA, courses taken, etc.)

-Talk to your friends and family about it

-Most programs accept Sophomores and above: no Freshmen.



Applying

- Each school may vary: look into your school's full application.
- Most require a written recommendation from a previous teacher.
- Passport **ABSOLUTELY** required PRIOR to be accepted into program.
(Cannot expire within 6 months of studying abroad)
- Art programs may require a portfolio review.
- Some schools may have an application fee.

Acceptance

- Once accepted, start applying for your COE and Visa immediately.
- You may not be selected; there is always next semester.
- Many programs will have non-refundable deposits for programs.

Ex. Temple Study Abroad Deposit is \$200 due within two weeks of acceptance.

Visas

- COE (Certificate of Eligibility) required in Japan for all students abroad.
- Visas can take **MONTHS**. Once accepted, apply for your visa ASAP. Don't delay!
- You will need to provide financial proof saying you can afford it (financial aid receipts, money from family, income, scholarships)
- Will need an additional Passport photo.
- Visa process can cost up to \$200.



Entering Japan guidelines

-Certain things illegal in Japan, such as:



-Sudafed, and some allergy and sinus medications that have stimulants

-Some inhalers, again containing stimulants

-Some medications will require a “Yakkan Shoumei”.



-Speak with your insurance about getting prescriptions BEFORE you leave.

Preparing to Leave

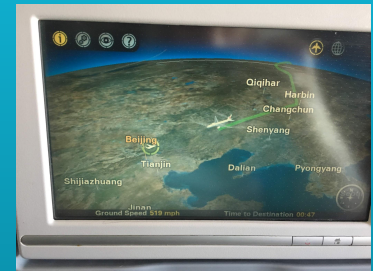
Getting to Japan



-Flights can go up to \$2,000 or more for round trip! There are solutions!

-Purchase your tickets at least 6 months in advance if possible, to avoid absurd prices.

-Check with the airline you choose about baggage policies.



-Average flight to Japan is 15 hours from US East Coast, or more with a layover.

-Try to plan with other students going, so that you can all sit together (and save \$\$).

Packing



-Most things can be purchased in Japan (soap, detergent, shampoo, etc.)

-PACK DEODORANT AND COLD MEDICINE!

-If you plan on purchasing clothing in Japan, pack less clothing (consider Asian sizes).

- LEAVE SPACE FOR THINGS YOU BUY THERE. You can also ship these things home too.

-Ladies, pack tampons.

-Make sure you're aware of your weight! Usually 50lb (23kg) limit per bag.



Where to Live

Dorms



- Regardless if Co-ed, most dorms still separated by gender.
- Ladies: some female dorms have curfews.
- Alcohol most times NOT allowed in dorms.
- Nice way to interact with other students at your school.
- Some dorms will not be exclusive to your school; other college students there.
- Meal Plan/Pay for your meals.



Homestay

- Meals **should** be provided by family.
- the truest form of the culture you'll experience
- make sure you connect with the family; let your school know ASAP if it doesn't.
- Not all families will be the same.
- Be very honest with process of matching with a family.



Out-of-pocket Living/Apartment

- Sakura House! A guest house rental that partners with a lot of English students.
- Small lifestyle; most likely will be sharing living spaces with other students.
- Alone will cost more; shared will be less.
- Can choose location and “make your own rules”.
- Prices CAN be lower than dorms.
- Make sure you put your first and last rent months out; they fill up fast!



Things to consider

- Regardless of where you live, consider DISTANCE!
- Some areas are more residential; respect the area and don't be too loud outside.
- The further from school, longer commute. Avoid rush hour trains if possible.
- Distance= more train/bus transfers.
- Distance= further from city center, less English.



Financing

Airfare

- STA Travel: for students, and allows you to pay over time.
- Justfly.com, Skyscanner, and using any member or credit card partner.
- Use a Private Web Page (Private Browsing, Incognito Mode) to protect from cookies increasing prices.
- Again, buy your tickets as soon as you can to avoid inflation!

Tuition

- Even though abroad, In-State still cheaper.
- Check for scholarships through your school, the partner school, and scholarships for students in Japan.
- Internships (Japanese and English available).
- Part-time jobs! Through school, or even online!

Living Costs

- Pasmo/Suica: Get a commuter pass
- Lunches (packing, conbini, etc.)
- Pocket Wifi/Softbank SD card/Data plan expenses
- Night Life (Drinking age in Japan is 20)
- Entertainment (Trips, Museums, Sightseeing, etc.)
- Potentially visiting other local countries (China, Taiwan, S.Korea, etc.)



Ways to Save/Tips

Daily Ways to Save

- Pack a lunch! Bento boxes, discounted Grocery items after 20:00.
- Eating in! Easy meals: Omurice, Stir Fry, Curry, Okonomiyaki.
- JR Pass for those using Shinkansen!
- Walking vs. Train
- Check entertainment to see if there are discounted after hours



Tips

-Make friends BEFORE your flight!



-If field trips or group trips offered from your school, do them!

-Homesickness will happen, no matter what. Friends will help.

-Try to plan some big trips towards the end of the semester (something to look forward to).

-Bring some American food from home (macaroni, Tasty Kake, etc.)

Schools

Gettysburg College

Partners with:

- Temple University Japan, Tokyo
- Kansai Gaidai University, Hirakata (between Osaka, Nara, and Kyoto)
- All courses taught in English (besides Language classes).
- Homestay and Dorms available.

Temple University

- Temple University Japan, Setagaya City, Tokyo
- For Study Abroad, and students can transfer there as well.
- Minimum GPA 2.75 with Prerequisites including a course with either Japanese Language or Asian Culture.
- Homestay and Dorms available.

Bloomsburg

- partners with **IES** (Institute for the International Education of Students) and **CIEE** (Council on International Educational Exchange)
- IES: Kanda University of International Studies, Makuhari (Tokyo Bay, Chiba)
- CIEE: Sophia University, Chiyoda City, Tokyo
- Minimum 2.5 GPA required.

PennState

Partners with:

- IES: Nanzan University (Nagoya), Kanda University of International Studies
- Ibaraki University, Mito (Ibaraki Pref.)
- Tohoku University, Sendai (limited majors)
- 2.75 GPA minimum required, as well as being at least a Sophomore.



9/23 2-2:45pm
10/22 3:30-4:15pm
11/6 3-3:45pm

**Rm. 200
Tuttleman Learning
Center**



9/28 10am-12pm

**Open House
Center for Global
Education**



9/18 4pm
10/9 12pm
10/23 4pm
11/6 12pm
11/20 4pm
12/4 12pm

410 Boucke Building